

SOLAR KIT

0.5~30kW (Off-Grid, Tile Roof)

- Available in different sizes from 500W to 30kW
- All-in-one inverter & charge controller
- Integrated energy management system with a variety of work modes
- Safe, quiet and stable frequency isolation transformer design
- Electric/diesel generator bypass
- 110V/230V optional, 50Hz/60Hz adaptive
- External batteries, flexible configuration
- Deep-cycle VRLA-GEL battery
- Easy installation, convenient operation
- Free pre-sales technical support, including customization
- One-stop after-sales service for the whole solar kit

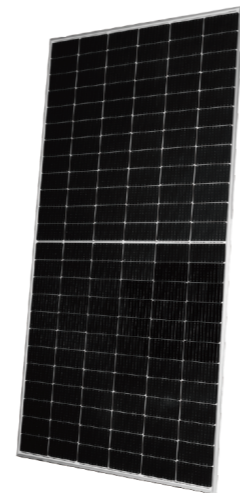


System Parts	500W	Quantity	1 kW kit	Quantity	xx kW KIT	Quantity	30kW kit	Quantity
PV Module	Panel 540W	1	Panel 540W	2	Panel 540W	xxx	Panel 540W	56
PV Combiner Box			PVCB-06L-400	1	PVCB-xxxkW	1	PVCB-30kW	1
Solar Charge Inverter	YN-500E	1	YN-1000E	1	YN-xxxE	1	YN-30kE	1
Lead-acid Battery	HF-12200	2	HF-12200	4	HF-12200	xxx	HF-12200	60

Battery standby: 1 day (50% DOD1).

A Panel

Electrical Characteristics STC	Panel 540W
Maximum Power (Pmax)	540W
Power Tolerance	0~+5W
Module Efficiency	20.9%
Maximum Power Current (Imp)	13.27A
Maximum Power Voltage (Vmp)	40.7V
Short Circuit Current (Isc)	13.85A
Open Circuit Voltage (Voc)	49.42V
Dimension	2278 x 1134 x 35 mm (89.69*44.65*1.38 inch)
Weight	28 kg
Value at standard test conditions(STC): AM1.5, Irradiance 1000W/m ² , Cell temperature 25°C	



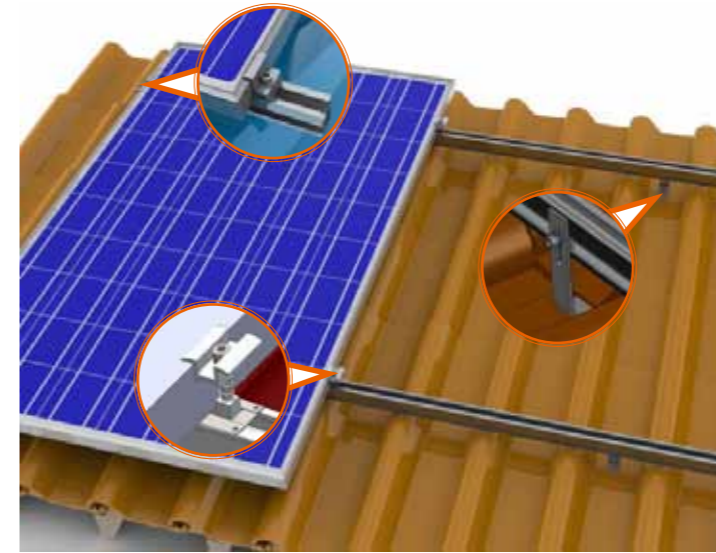
Also Applicable For Module With Black Frame

B PV Cable

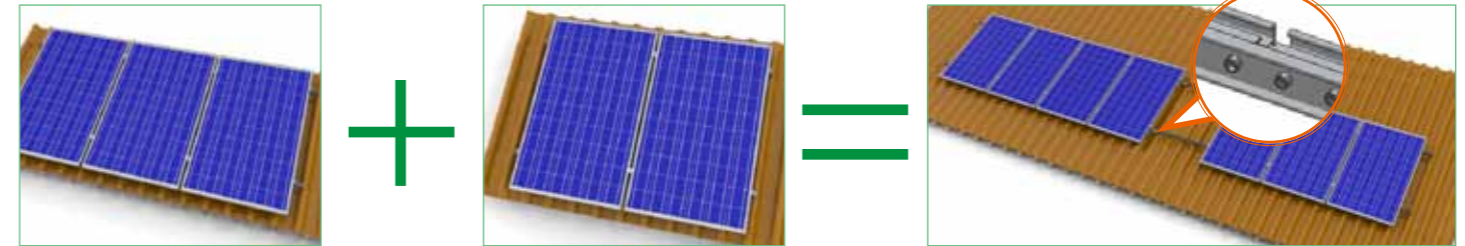
NC No.	Picture	Tinned copper wire (Ω/km)	Number and Nominal cross-sectional area (mm ²)	Approx Weight of cable (kg/100m)
352001010002		5.09	2×4	14.39
352001010004		3.39	2×6	20.64
352001010001		5.09	1×4	6.75
352001010003		3.39	1×6	9.37

Note: MOQ 100m

Tile Roof Solar Racking System



Part No.	NC No.	Part Name	Picture	Qty
①	10110170	R-S1, Standard Rail 1# L4200		2
②	10110047	SR-S1/200, Splice Group for Standard Rail1#		1
③	10110049	C-SM/H35-45, Middle Clamp Group (H35-45)		7
④	10110050	C-SE, End Clamp Group		4
⑤	10110055	RH-PT/1P, SS Tile Roof Hook 1P Group		6
⑥	35170355	CS-CC/L20, Cable Clip		4
⑦	10110063	GS-GP/SR, Grounding Plate I		4
⑧	10110064	GS-GC/SR, Grounding Clip Group		3



Note 1: The configuration above is for a 1kW solar kit system. The configuration Qty to N times can be changed (N is solar kit system power, from 1~30kW).

Note 2: At the application site, the wind speed should be lower than 40m/s and the height of the roof should be less than 10 meters. For sites with conditions out of these ranges, please contact ReneSola for technical support.

D Inverter+Battery

Model	YN-500	YN-1000	YN-xxxW	YN-30kW
Output Power	500W	1000W	1500W	30kW
Battery	Gel battery (optional)			
Battery Type	Gel battery (optional)			
Battery Voltage	24Vdc	48Vdc		
Charge Mode	Constant current; Constant potential; Floating charge			
Temperature Compensation	3mV/°C			
PV				
Input Voltage	24-45V	40Vdc~90Vdc		
PV Panels Imp	<40A	<60A		
Max Transfer Efficiency	98%			
Max Charge Current	10-40A (optional)			
Display	LCD+LED			
Mains Status	165Vac~275Vac/85Vac~135Vac			
(Optional)	45Hz~65Hz			
Max Charge Current	12A			
Max Charge Efficiency	98%			
Output Voltage	220Vac/110Vac+-5% 50Hz/60Hz			
Inverter Output	50Hz/60Hz			
Output Frequency	84.50%			
Max Efficiency				
Communication Port (optional)	RS232/USB			
Size	Tower 420*145*215		475*200*337	
D*W*H	Inverter Wall-mounted		380*195*478	
Weight (Kg)	12	17	22	25
Ambient Temperature	0~50°C			
Ambient Humidity	10%~90% (Non Condensed)			
IP Class	IP20			
Noise	<50dB			



Battery (External)	500W kit	1kW kit	xxxkW kit	30kW kit
Battery Type	VRLA-GEL	VRLA-GEL	VRLA-GEL	VRLA-GEL
Rated Battery Voltage & Capacity	24V 200Ah	48V 200Ah	48V xxxAh	48V 6000Ah
No. of Cycles (50% DoD1@25°C)	600	600	xxx	600
No. of Cycles (30% DoD1@25°C)	1500	1500	xxx	1500
Total Energy Content(C10 ¹)	4.8KWh (100% DOD)	9.6KWh (100% DOD)	xxxKWh (100% DOD)	288KWh (100% DOD)
Max. Output Power	approx. 750W	approx. 1500W	approx. xxxW	approx. 45kW
No. of Block Batteries (at 12V rated voltage)	2	4	xxx	120

Follow us



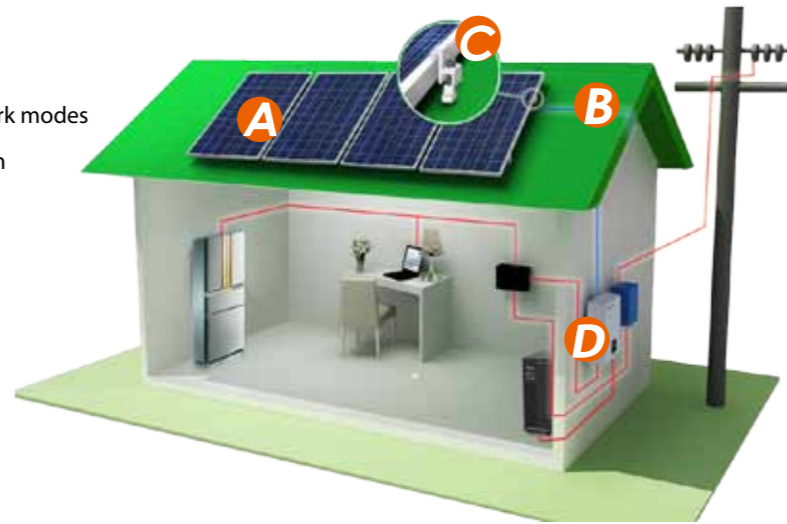
www.g-friend.cn

Version 1.01

SOLAR KIT

0.5~30kW (Off-Grid, Tie Roof)

- Available in different sizes from 500W to 30kW
- All-in-one inverter & charge controller
- Integrated energy management system with a variety of work modes
- Safe, quiet and stable frequency isolation transformer design
- Electric/diesel generator bypass
- 110V/230V optional, 50Hz/60Hz adaptive
- External batteries, flexible configuration
- Deep-cycle VRLA-GEL battery
- Easy installation, convenient operation
- Free pre-sales technical support, including customization
- One-stop after-sales service for the whole solar kit

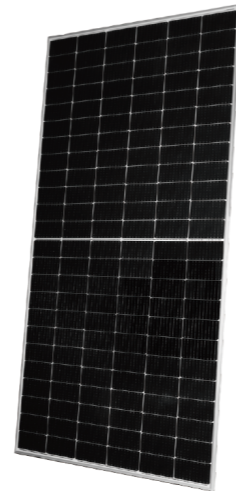


System Parts	500W	Quantity	1 kW kit	Quantity	xx kW KIT	Quantity	30kW kit	Quantity
PV Module	Panel 540W	1	Panel 540W	2	Panel 540W	xxx	Panel 540W	56
PV Combiner Box			PVCB-06L-400	1	PVCB-xxxkW	1	PVCB-30kW	1
Solar Charge Inverter	YN-500E	1	YN-1000E	1	YN-xxxE	1	YN-30kE	1
Lead-acid Battery	HF-12200	2	HF-12200	4	HF-12200	xxx	HF-12200	60

Battery standby: 1 day (50% DOD1).





A Panel

Electrical Characteristics STC	Panel 540W
Maximum Power (Pmax)	540W
Power Tolerance	0~+5W
Module Efficiency	20.9%
Maximum Power Current (Imp)	13.27A
Maximum Power Voltage (Vmp)	40.7V
Short Circuit Current (Isc)	13.85A
Open Circuit Voltage (Voc)	49.42V
Dimension	2278 x 1134 x 35 mm (89.69*44.65*1.38 inch)
Weight	28 kg
Value at standard test conditions(STC): AM1.5, Irradiance 1000W/m ² , Cell temperature 25°C	



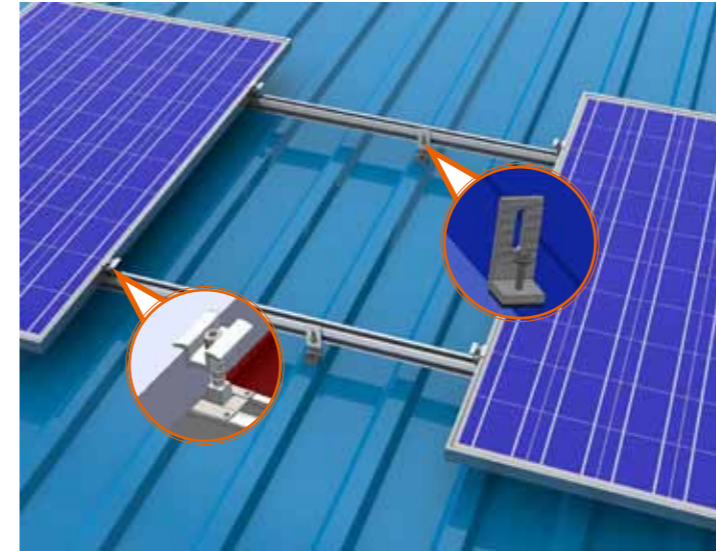
Also Applicable For Module With Black Frame









B PV Cable

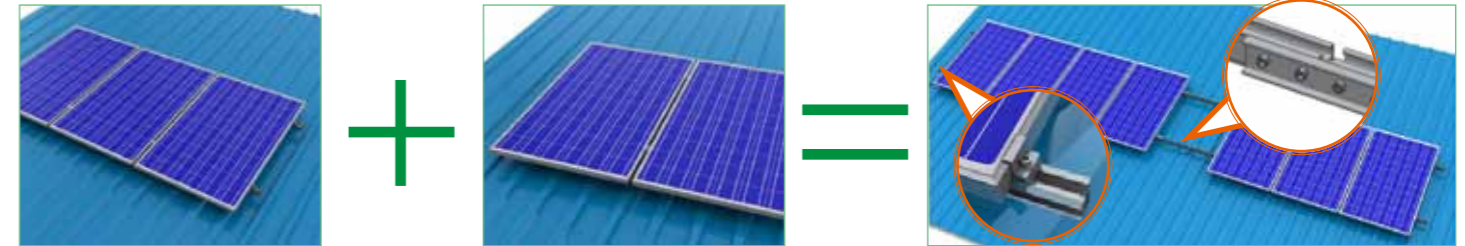
NC No.	Picture	Tinned copper wire (Ω/km)	Number and Nominal cross-sectional area (mm ²)	Approx Weight of cable (kg/100m)
352001010002		5.09	2x4	14.39
352001010004		3.39	2x6	20.64
352001010001		5.09	1x4	6.75
352001010003		3.39	1x6	9.37

Note: MOQ 100m

Tin Roof Solar Racking System



Part No.	NC No.	Part Name	Picture	Qty
①	10110170	R-S1, Standard Rail 1# L4200		2
②	10110047	SR-S1/200, Splice Group for Standard Rail1#		1
③	10110049	C-SM/H35-45, Middle Clamp Group (H35-45)		7
④	10110050	C-SE, End Clamp Group		4
⑤	10110052	RB-CT/L, L- Foot Group		8
⑥	35170355	CS-CC/L20, Cable Clip		4
⑦	10110063	GS-GP/SR, Grounding Plate I		4
⑧	10110064	GS-GC/SR, Grounding Clip Group		3



Note 1: The configuration above is for a 1kW solar kit system. The configuration Qty to N times can be changed (N is solar kit system power, from 1~5kW).

Note 2: At the application site, the wind speed should be lower than 40m/s and the height of the roof should be less than 10 meters. For sites with conditions out of these ranges, please contact ReneSola for technical support.

D Inverter+Battery

Model	YN-500	YN-1000	YN-xxxW	YN-30kW
Output Power	500W	1000W	1500W	30kW
Battery Type	Gel battery (optional)			
Battery Voltage	24Vdc	48Vdc		
Charge Mode	Constant current; Constant potential; Floating charge			
Temperature Compensation	3mV/°C			
Input Voltage	24-45V	40Vdc~90Vdc		
PV Panels Imp	<40A	<60A		
Max Transfer Efficiency	98%			
Max Charge Current	10-40A (optional)			
Display	LCD+LED			
Mains Status	Input Voltage 165Vac~275Vac/85Vac~135Vac			
(Optional)	Input Frequency 45Hz~65Hz			
Max Charge Current	12A			
Max Charge Efficiency	98%			
Output Voltage	220Vac/110Vac+-5% 50Hz/60Hz			
Inverter Output	Output Frequency 50Hz/60Hz			
Max Efficiency	84.50%			
Communication Port (optional)	RS232/USB			
Size	Tower	420*145*215		
D*W*H	Inverter	475*200*337		
	Wall-mounted	380*195*478		
Weight (Kg)		12	17	22
Ambient Temperature	0~50°C			
Ambient Humidity	10%~90% (Non Condensed)			
IP Class	IP20			
Noise	<50dB			



Battery (External)	500W kit	1kW kit	xxxkW kit	30kW kit
Battery Type	VRLA-GEL	VRLA-GEL	VRLA-GEL	VRLA-GEL
Rated Battery Voltage & Capacity	24V 200Ah	48V 200Ah	48V xxxAh	48V 6000Ah
No. of Cycles (50% DoD1@25°C)	600	600	xxx	600
No. of Cycles (30% DoD1@25°C)	1500	1500	xxx	1500
Total Energy Content(C10 ¹)	4.8KWh (100% DOD)	9.6KWh (100% DOD)	xxxKWh (100% DOD)	288KWh (100% DOD)
Max. Output Power	approx. 750W	approx. 1500W	approx. xxxW	approx. 45kW
No. of Block Batteries (at 12V rated voltage)	2	4	xxx	120

Follow us



www.g-friend.cn

Version 1.01

SOLAR KIT

0.5~30kW (Off-Grid, Adjustable Triangle)

- Available in different sizes from 500W to 30kW
- All-in-one inverter & charge controller
- Integrated energy management system with a variety of work modes
- Safe, quiet and stable frequency isolation transformer design
- Electric/diesel generator bypass
- 110V/230V optional, 50Hz/60Hz adaptive
- External batteries, flexible configuration
- Deep-cycle VRLA-GEL battery
- Easy installation, convenient operation
- Free pre-sales technical support, including customization
- One-stop after-sales service for the whole solar kit

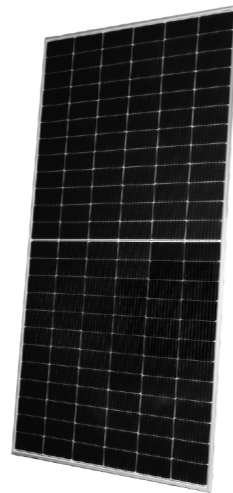


System Parts	500W	Quantity	1 kW kit	Quantity	xx kW KIT	Quantity	30kW kit	Quantity
PV Module	Panel 540W	1	Panel 540W	2	Panel 540W	xxx	Panel 540W	56
PV Combiner Box			PVCB-06L-400	1	PVCB-xxxkW	1	PVCB-30kW	1
Solar Charge Inverter	YN-500E	1	YN-1000E	1	YN-xxxE	1	YN-30kE	1
Lead-acid Battery	HF-12200	2	HF-12200	4	HF-12200	xxx	HF-12200	60

Battery standby: 1 day (50% DOD1).





A Panel

Electrical Characteristics STC	Panel 540W
Maximum Power (Pmax)	540W
Power Tolerance	0~+5W
Module Efficiency	20.9%
Maximum Power Current (Imp)	13.27A
Maximum Power Voltage (Vmp)	40.7V
Short Circuit Current (Isc)	13.85A
Open Circuit Voltage (Voc)	49.42V
Dimension	2278 x 1134 x 35 mm (89.69*44.65*1.38 inch)
Weight	28 kg
Value at standard test conditions(STC): AM1.5, Irradiance 1000W/m ² , Cell temperature 25°C	



Also Applicable For Module With Black Frame

B PV Cable

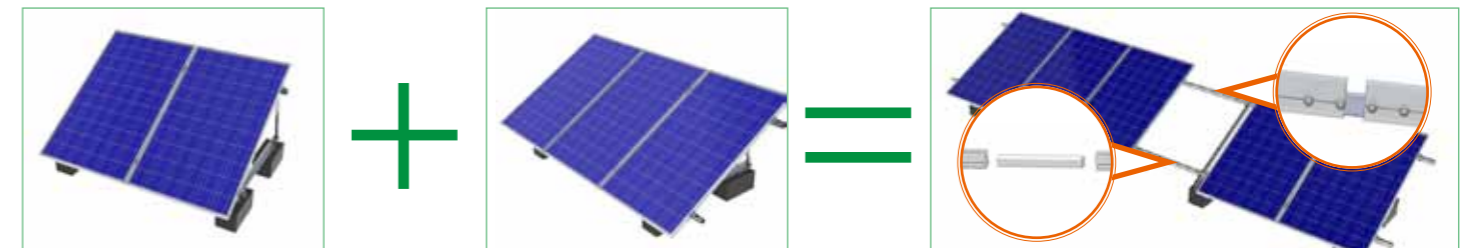
NC No.	Picture	Tinned copper wire (Ω/km)	Number and Nominal cross-sectional area (mm ²)	Approx Weight of cable (kg/100m)
352001010002		5.09	2x4	14.39
352001010004		3.39	2x6	20.64
352001010001		5.09	1x4	6.75
352001010003		3.39	1x6	9.37

Note: MOQ 100m

Adjustable Triangle Solar Racking System



Part No.	NC No.	Part Name	Picture	Qty
①	35170308	R-T1, T Rail L4200		2
②	10110233	SR-T1/300, Splice Group For T Rail		1
③	10110049	C-SM/H35-45, Middle Clamp Group (H35-45)		7
④	10110050	C-SE, End Clamp Group		4
⑤	35170309	RB-ATR 10/15, Adjustable triangle Group (10~15 deg)		3
	35170310	RB-ATR 15/30, Adjustable triangle Group (15~30 deg)		(Choose one type)
	35170311	RB-ATR 30/60, Adjustable triangle Group (30~60 deg)		
⑥	35170313	C-BR, Bottom Rail Clamp		12
⑦	35170355	CS-CC/L20, Cable clip		4
⑧	10110063	GS-GP/SR, Grounding Plate I		4
⑨	10110064	GS-GC/SR, Grounding Clip Group		3



Note 1: The configuration above is for a 1kW solar kit system. The configuration Qty to N times can be changed (N is solar kit system power, from 1~5kW).

Note 2: At the application site, the wind speed should be lower than 40m/s and the height of the roof should be less than 10 meters. For sites with conditions out of these ranges, please contact ReneSola for technical support.

D Inverter+Battery

Model	YN-500	YN-1000	YN-xxxW	YN-30kW
Output Power	500W	1000W	1500W	30kW
Battery	Gel battery (optional)			
Battery Type	Gel battery (optional)			
Battery Voltage	24Vdc	48Vdc		
Charge Mode	Constant current; Constant potential; Floating charge			
Temperature Compensation	3mV/°C			
PV	40Vdc~90Vdc			
Input Voltage	24-45V	40Vdc~90Vdc		
PV Panels Imp	<40A	<60A		
Max Transfer Efficiency	98%			
Max Charge Current	10-40A (optional)			
Display	LCD+LED			
Mains Status	165Vac~275Vac/85Vac~135Vac			
(Optional)	45Hz~65Hz			
Input Frequency	12A			
Max Charge Current	98%			
Max Charge Efficiency	220Vac/110Vac+/-5% 50Hz/60Hz			
Output Voltage	50Hz/60Hz			
Output Frequency	84.50%			
Max Efficiency	RS232/USB			
Communication Port (optional)	420*145*215			
Size	Tower		475*200*337	
D*W*H	Inverter	Wall-mounted	380*195*478	
Weight (Kg)	12		17	22
Ambient Temperature	0~50°C			
Ambient Humidity	10%~90% (Non Condensed)			
IP Class	IP20			
Noise	<50dB			



Battery (External)	500W kit	1kW kit	xxxkW kit	30kW kit
Battery Type	VRLA-GEL	VRLA-GEL	VRLA-GEL	VRLA-GEL
Rated Battery Voltage & Capacity	24V 200Ah	48V 200Ah	48V xxxAh	48V 6000Ah
No. of Cycles (50% DoD1@25°C)	600	600	xxx	600
No. of Cycles (30% DoD1@25°C)	1500	1500	xxx	1500
Total Energy Content(C10 ²)	4.8KWh (100% DOD)	9.6KWh (100% DOD)	xxxKWh (100% DOD)	288KWh (100% DOD)
Max. Output Power	approx. 750W	approx. 1500W	approx. xxxW	approx. 45kW
No. of Block Batteries (at 12V rated voltage)	2	4	xxx	120

Follow us



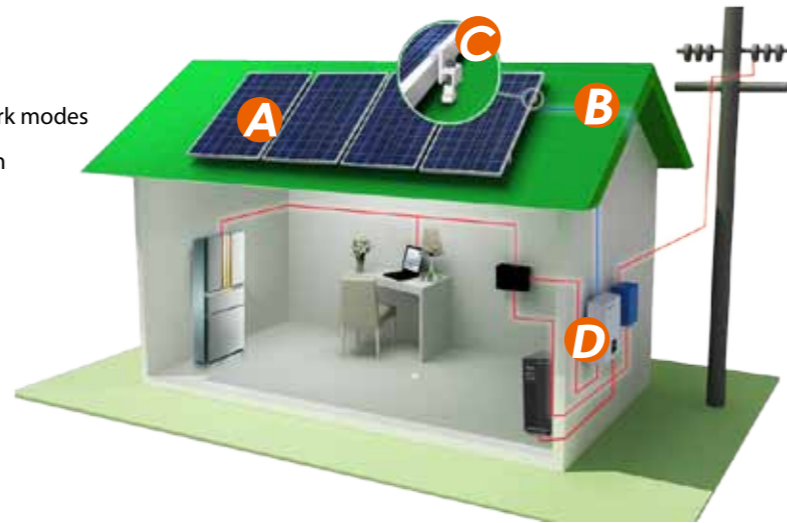
www.g-friend.cn

Version 1.01

SOLAR KIT

0.5~30kW (Off-Grid, Flat Tin Roof)

- Available in different sizes from 500W to 30kW
- All-in-one inverter & charge controller
- Integrated energy management system with a variety of work modes
- Safe, quiet and stable frequency isolation transformer design
- Electric/diesel generator bypass
- 110V/230V optional, 50Hz/60Hz adaptive
- External batteries, flexible configuration
- Deep-cycle VRLA-GEL battery
- Easy installation, convenient operation
- Free pre-sales technical support, including customization
- One-stop after-sales service for the whole solar kit

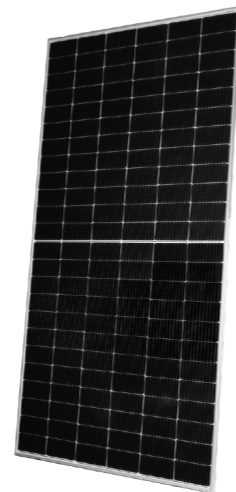


System Parts	500W	Quantity	1 kW kit	Quantity	xx kW KIT	Quantity	30kW kit	Quantity
PV Module	Panel 540W	1	Panel 540W	2	Panel 540W	xxx	Panel 540W	56
PV Combiner Box			PVCB-06L-400	1	PVCB-xxxkW	1	PVCB-30kW	1
Solar Charge Inverter	YN-500E	1	YN-1000E	1	YN-xxxE	1	YN-30kE	1
Lead-acid Battery	HF-12200	2	HF-12200	4	HF-12200	xxx	HF-12200	60

Battery standby: 1 day (50% DOD1).





A Panel

Electrical Characteristics STC	Panel 540W
Maximum Power (Pmax)	540W
Power Tolerance	0~+5W
Module Efficiency	20.9%
Maximum Power Current (Imp)	13.27A
Maximum Power Voltage (Vmp)	40.7V
Short Circuit Current (Isc)	13.85A
Open Circuit Voltage (Voc)	49.42V
Dimension	2278 x 1134 x 35 mm (89.69*44.65*1.38 inch)
Weight	28 kg
Value at standard test conditions(STC): AM1.5, Irradiance 1000W/m ² , Cell temperature 25°C	



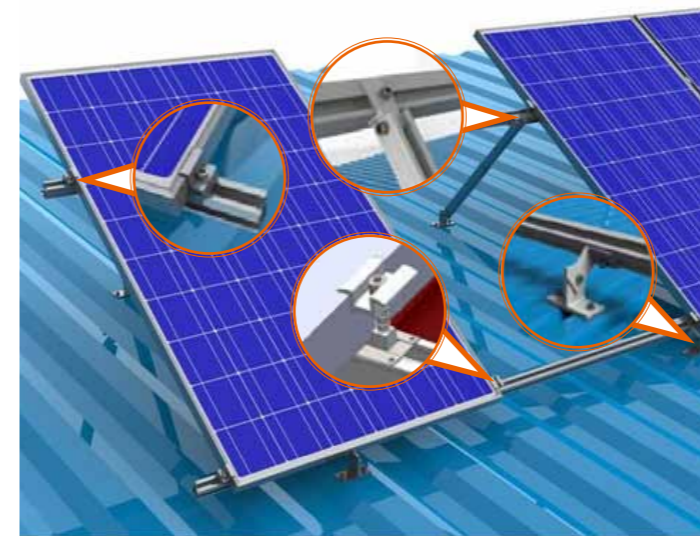
Also Applicable For Module With Black Frame

B PV Cable

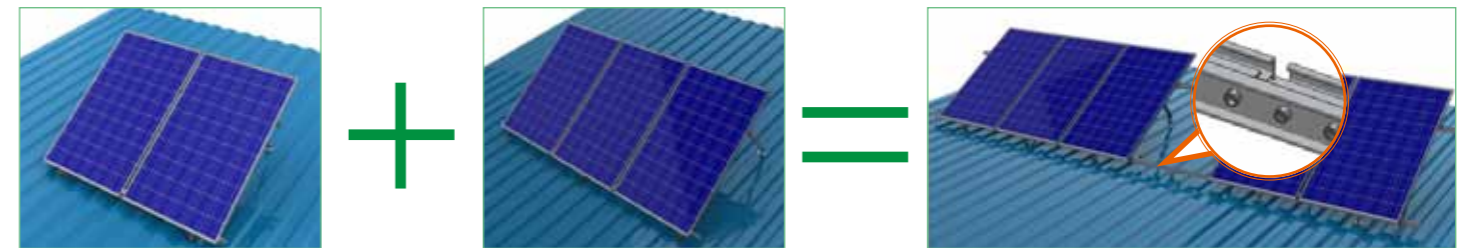
NC No.	Picture	Tinned copper wire (Ω/km)	Number and Nominal cross-sectional area (mm ²)	Approx Weight of cable (kg/100m)
352001010002		5.09	2×4	14.39
352001010004		3.39	2×6	20.64
352001010001		5.09	1×4	6.75
352001010003		3.39	1×6	9.37

Note: MOQ 100m

Flat Tin Roof Solar Racking System



Part No.	NC No.	Part Name	Picture	Qty
①	10110170	R-S1, Standard Rail 1# L4200		2
②	10110047	SR-S1/200, Splice Group for Standard Rail1#		1
③	10110049	C-SM/H35-45, Middle Clamp Group (H35-45)		7
④	10110050	C-SE, End Clamp Group		4
⑤	10110336 10110337 10110338	RB-TA10/15°, Adjustable Tilt Leg Group (10°~15°) RB-TA15/30°, Adjustable Tilt Leg Group (15°~30°) RB-TA30/60°, Adjustable Tilt Leg Group (30°~60°)		3 (Choose one type)
⑥	35150355	CS-CC/L20, Cable Clip		4
⑦	10110063	GS-GP/SR, Grounding Plate I		4
⑧	10110064	GS-GC/SR, Grounding Clip Group		3



Note 1: The configuration above is for a 1kW solar kit system. The configuration Qty to N times can be changed (N is solar kit system power, from 1~5kW).

Note 2: At the application site, the wind speed should be lower than 40m/s and the height of the roof should be less than 10 meters. For sites with conditions out of these ranges, please contact ReneSola for technical support.

D Inverter+Battery

Model	YN-500	YN-1000	YN-xxxW	YN-30kW
Output Power	500W	1000W	1500W	30kW
Battery Type	Gel battery (optional)			
Battery Voltage	24Vdc	48Vdc		
Charge Mode	Constant current; Constant potential; Floating charge			
Temperature Compensation	3mV/°C			
Input Voltage	24-45V	40Vdc~90Vdc		
PV Panels Imp	<40A	<60A		
Max Transfer Efficiency	98%			
Max Charge Current	10-40A (optional)			
Display Panel	LCD+LED			
Mains Status	165Vac~275Vac/85Vac~135Vac			
(Optional)	Input Frequency 45Hz~65Hz			
Max Charge Current	12A			
Max Charge Efficiency	98%			
Output Voltage	220Vac/110Vac+-5% 50Hz/60Hz			
Output Frequency	50Hz/60Hz			
Max Efficiency	84.50%			
Communication Port (optional)	RS232/USB			
Size	Tower	420*145*215		
D*W*H	Wall-mounted	380*195*478		
Weight (Kg)		12	17	22
Ambient Temperature	0~50°C			
Ambient Humidity	10%~90% (Non Condensed)			
IP Class	IP20			
Noise	<50dB			



Battery (External)	500W kit	1kW kit	xxxkW kit	30kW kit
Battery Type	VRLA-GEL	VRLA-GEL	VRLA-GEL	VRLA-GEL
Rated Battery Voltage & Capacity	24V 200Ah	48V 200Ah	48V xxxAh	48V 6000Ah
No. of Cycles (50% DoD1@25°C)	600	600	xxx	600
No. of Cycles (30% DoD1@25°C)	1500	1500	xxx	1500
Total Energy Content(C10 ¹)	4.8KWh (100% DOD)	9.6KWh (100% DOD)	xxxKWh (100% DOD)	288KWh (100% DOD)
Max. Output Power	approx. 750W	approx. 1500W	approx. xxxW	approx. 45kW
No. of Block Batteries (at 12V rated voltage)	2	4	xxx	120

Follow us



www.g-friend.cn

Version 1.01